

In this factfile:

- College facilities
- Local map
- Key staff
- Courses available
- Sample activities
- Nationality statistics
- Student survey results
- Typical excursions
- Accommodation options

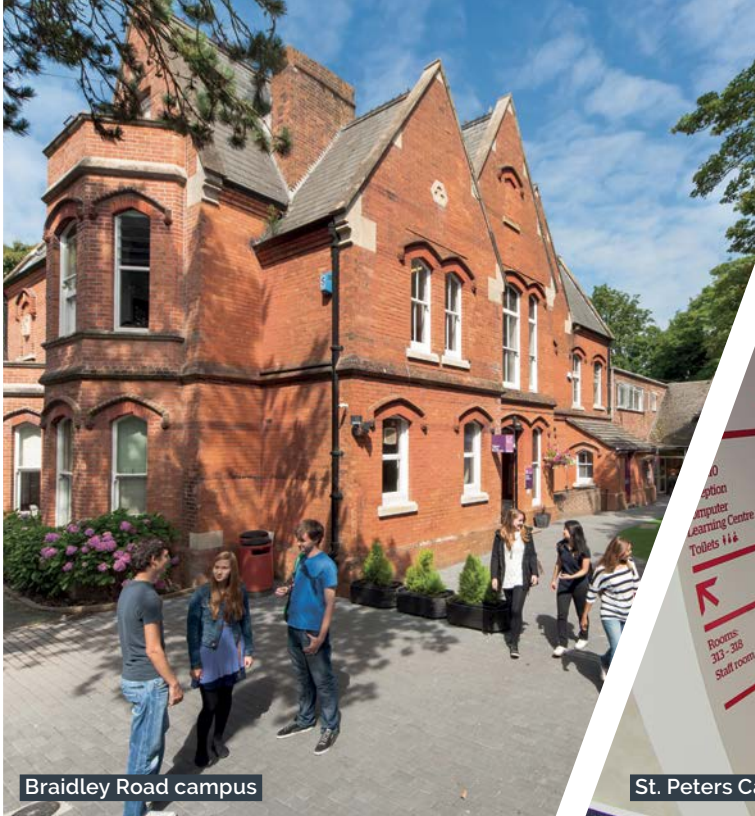


Kings Bournemouth

Choose Kings Bournemouth

- 1 Often voted the best beach in the UK
- 2 University city with relaxed lifestyle
- 3 City centre campus with residence





Braidley Road campus



St. Peters Campus

People you'll meet



Andrew Short
Principal



Andy Plain
Director of Studies



Belen Sullivan
Homestay Manager



Lucy Polley
College Services
Manager



Sasha Konovalova
Welfare
Manager



Welcome to Kings Bournemouth Braidley Road

Kings Bournemouth's Braidley Road campus is located in an attractive residential area, close to the city centre. Consisting of two large buildings, it is the main teaching and administration centre, and is surrounded by gardens with lawns and patios. Facilities at the campus are fantastic, with spacious, well-equipped classrooms, two computer learning centres, a leisure/activity hall and a cafeteria and restaurant. Outside, there is a dedicated on-site sports court.

College address and contact number

Kings Bournemouth
58 Braidley Road
Bournemouth
Dorset, BH2 6LD

T +44 (0)1202 293535

F +44 (0)1202 293922

College facilities

Well-equipped classrooms, most with interactive whiteboards

Two Computer Learning Centres

Leisure/activity hall

Library

On-site outdoor sports court

Three outside table tennis tables

Restaurant and cafeteria

Science lab

Art studio

Watch the Kings Bournemouth video

Visit kingshub.online/colleges-bournemouth

or follow this QR code



Location factfile: Kings Bournemouth



Many classrooms at Braidley Road have been recently renovated



The Hall is a great space for lots of different events



The library at Braidley Road



51 Braidley Road, the second campus building, across the street from 58 Braidley Road



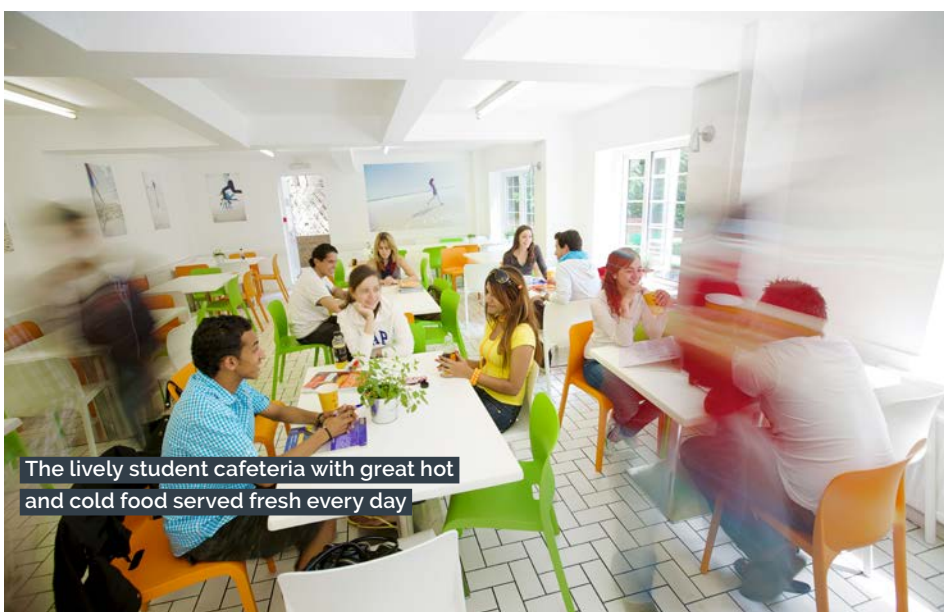
The large sports court within the grounds of 58 Braidley Road



Versatile space above the cafeteria used for teaching or activities



The top floor of our Braidley Road campus has been renovated in a contemporary style



The lively student cafeteria with great hot and cold food served fresh every day

Welcome to Kings Bournemouth

St. Peters Quarter

Our brand new building at St. Peters Quarter is located in the heart of Bournemouth city centre. Occupying the entire top floor of a centrally located building, it boasts bright, spacious classrooms with interactive whiteboards, a computer learning centre and a large social area. The building has been entirely refurbished to provide an ultra-contemporary loft feel, complete with exposed brickwork, steel columns and ceiling.

College address and contact number

Kings Bournemouth
St. Peters Quarter
St. Peter's Rd
Bournemouth
BH1 2AD

T +44 (0)1202 293535
F +44 (0)1202 293922

College facilities

- 15 classrooms
- Computer Learning Centre
- Private rooms for university counselling
- Designated prayer room
- Lift direct to floor
- White boards in 10 classrooms
- Large student zone with sofas and 65 inch flatscreen tv
- Free wifi
- Hotspot counter

Watch the Kings Bournemouth video

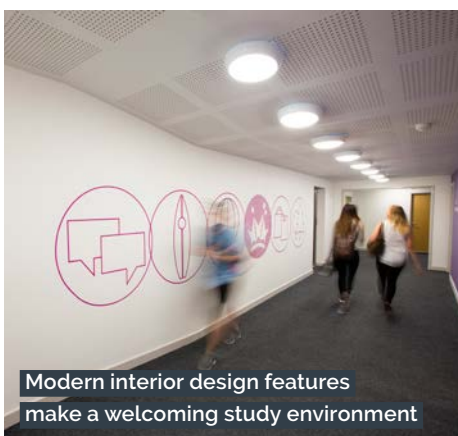
Visit kingshub.online/colleges-bournemouth,
or follow this QR code



Location factfile: Kings Bournemouth



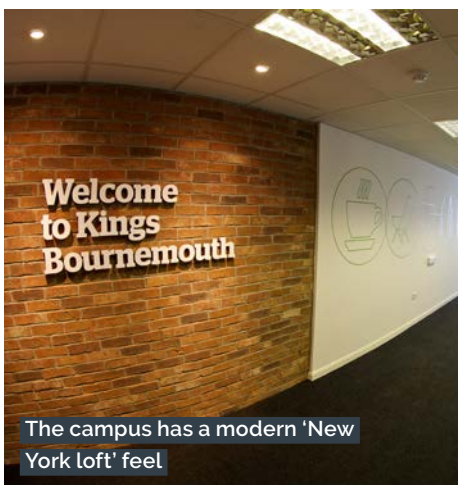
St. Peters campus in central Bournemouth



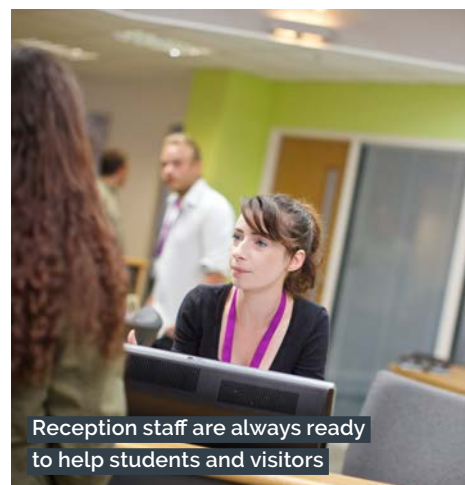
Modern interior design features make a welcoming study environment



St. Peters campus has been recently renovated throughout



The campus has a modern 'New York loft' feel



Reception staff are always ready to help students and visitors



Classrooms at St. Peters are spacious and light

GCSE

3 term GCSE:

Entry from: Age 15, IELTS 5.0*

Starts: September

4 – 7 terms GCSE:

Entry from: Age 14, IELTS 4.0*

Starts: September, January, April or June

A-levels

Entry from: Age 16, IELTS 5.5*

Starts: September or January

Extended A-level

Entry from: Age 15, IELTS 4.0*

Starts: September, January, April, June

Advanced Level Foundation

Entry from: Age 17, IELTS 5.5*

Starts: September or January

Extended Foundation

Entry from: Age 16, IELTS 4.5*

Starts: September, January, April, June

Aston University

Guaranteed Offer Programme

Entry from: 16 (A-level), 17 (ALF); IELTS 5.5*

Starts: September, January (not Medicine)

International Business Foundation

Entry from: Aged 17, IELTS 4.5*

Starts: September, January

Extended International Business Foundation

Entry from: Aged 17, IELTS 3.5*

Starts: September, January, April, June

International High School Programme

Entry from: Aged 14, IELTS* or Junior English Test

Starts: September and January

Boarding School Preparation Programme

Entry from: Aged 14, Junior English Test

Starts: September, January and April

English Preparation

Entry from: Aged 15, IELTS 3.5 – 5.0*

Starts: January, April, July and September

IELTS Preparation

Entry from: Aged 16, IELTS 4.0*

Starts: Various, see factsheet

* Or equivalent



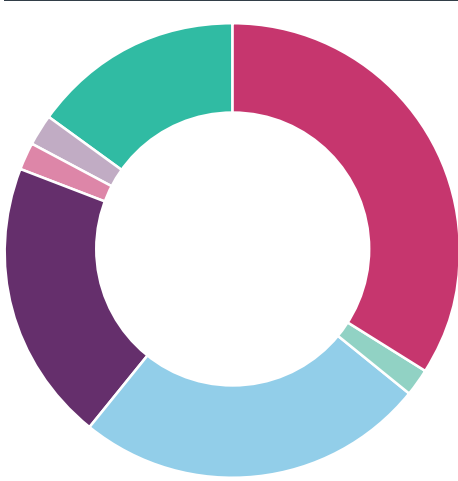
Sample Social activities

- Watersports
- Altitude — high and low ropes courses
- Table tennis
- Cinema trips and movie nights
- Boat trips
- Dance class
- Basketball
- Mountain biking in the New Forest
- Volleyball
- Snowtrax — skiing and snowboarding

Sample Clubs and Societies

- Student Council
- Yoga/Pilates Club
- Basketball Club
- Watersports
- Textiles Club
- Chess Club
- Martial Arts Club
- Astronomy Club
- Football Club
- Badminton Club
- Beach volleyball
- Premier League football at AFC Bournemouth

Nationality statistics



- Western Europe 34%
- Eastern Europe 2%
- Middle East 25%
- Asia 20%
- China/Hong Kong/Macau 2%
- Former Soviet Union 2%
- Americas 15%

Nationality Statistics 2017 – 2018

Sample enrichment

- Bletchley Park visit



Bletchley Park in Buckinghamshire was once the top-secret home of the World War II Codebreakers. Ciphers and codes of several Axis countries were decrypted here, including those generated by the German Enigma and Lorenz machines.

- BMW factory visit



The BMW Factory tour is popular with our students as it allows them to see how MINIs are made in the Oxford-based plant. The guided tour focuses on the vast assembly hall and the processes that take place within it.

- Biology field trip
- Google Science Fair
- Visit to World Travel Market in London

Sample activities calendar (click image or follow QR in bottom right corner to view current activities calendar)

Sunday	Monday	Tuesday	Wednesday	Thursday	Friday	Saturday
<p>Please note: All Activities and Excursions are subject to change. See Adam for more details.</p>	<p>School Closed</p>	<p>Roller Skating 15:00 B51/15:20 - SPQ Cost: £6.00</p>	<p>Beach Volleyball 15:00 B51/15:20 - SPQ Cost: Free!!</p>	<p>Bowling 15:00 B51/15:20 - SPQ Cost: £6.00</p>	<p>Bournemouth Airshow 12:15 - B51 OR SPQ 12:30 Cost: FREE!!</p>	<p>WEEKEND EXCURSIONS Available through UK Study Tours and Indigo Travel. Please see Student Services to make a booking.</p>
<p>WEEKEND EXCURSIONS Available through UK Study Tours and Indigo Travel. Please see Student Services to make a booking.</p>	<p>COSTA & COLOURING 15:00 B51/15:20 - SPQ Cost: FREE!!</p>	<p>Laser Tag 15:00 B51/15:20 - SPQ Cost: £7.50</p>	<p>Beach Bike Ride 15:00 B51/15:20 - SPQ Cost: £6.00</p>	<p>Sins of the World Art Exhibition 15:00 B51/15:20 - SPQ Cost: Free!!</p>	<p>Half-day excursion to the New Forest 12:15 B51 OR SPQ 12:30 Cost: £8.40</p>	<p>WEEKEND EXCURSIONS Available through UK Study Tours and Indigo Travel. Please see Student Services to make a booking. Weekend Excursions Available through UK</p>
<p>WEEKEND EXCURSIONS Available through UK Study Tours and Indigo Travel. Please see Student Services to make a booking. Available through UK</p>	<p>Classic Movie Afternoon: The Goonies 15:20 - B51 Cost: Free + Free popcorn</p>	<p>Smoothie Making 15:20 - B51 Cost: £2.00</p>	<p>Sea Kayaking 15:00 B51/15:20 - SPQ Cost: £15.00</p>	<p>Horror Escape Rooms 15:20 - B51 Cost: £10.00</p>	<p>Boat Hire in Christchurch 12:15 - B51 OR SPQ 12:30 Cost: £5.00 + Bus fare</p>	<p>WEEKEND EXCURSIONS Available through UK Study Tours and Indigo Travel. Please see Student Services to make a booking.</p>
<p>WEEKEND EXCURSIONS Available through UK Study Tours and Indigo Travel. Please see Student Services to make a booking.</p>	<p>Sweets from Around the World 15:20 - B51 Cost: Free!!</p>	<p>Pool and FIFA 15:00 B51/15:20 - SPQ Cost: £3.00</p>	<p>Tennis 15:00 B51/15:20 - SPQ Cost: £2.00</p>	<p>Gingerbread Making 15:20 - B58 Canteen Cost: £2.00</p>	<p>Excursion to Southampton Museum 12:30 - B51 Cost: £8.50</p>	<p>Please check student services notices board for our weekly evening activities.</p>
<p>WEEKEND EXCURSIONS Available through UK Study Tours and Indigo Travel. Please see Student Services to make a booking.</p>	<p>Traditional English Afternoon Tea 15:20 - B51 Cost: Free!!</p>	<p>National Pancake Day 15:00 B58 Canteen Cost: £1.00</p>	<p>Beach Football 15:00 B51/15:20 - SPQ Cost: Free!!</p>	<p>Beach BBQ and Games 15:00 B51/15:20 - SPQ Cost: Free (Bring own food)</p>	<p>Macmillan Charity Cake Sale 10:30 - B58/SPQ 12:30 Cost: Bring money to spend</p>	<p>Please check student services notices board for our weekly evening activities.</p>

Out and about in Bournemouth

Area surrounding St. Peters

St. Peters is right in the heart of the city centre, meaning that within minutes students can reach:

Shops, bars restaurants (1 minute)

Town centre residence (3 minutes)

Beach (5 minutes)

Area surrounding Braidley Road

Meyrick Park is a five minute walk from the College, and within it there is:

a health centre

a tennis court

a golf course

two large rugby/football fields

Distances to important landmarks

City Centre and Bournemouth Balloon 10 min walk, 10 min bus (from Braidley Road); 2 min walk (from St. Peters Quarter)

Beach 20 min walk, 15 min bus (from Braidley Road), 5 min walk (from St. Peters Quarter)

Train station 15 min walk, 10 min bus

New Forest 30 min train

London 2 hr train, 2.5 hr coach

Winchester 40 min train, 1 hr bus

Typical excursions

Poole Harbour

Brownsea Island (Summer only)

Salisbury and Stonehenge

Portsmouth

Bath

Oxford, Windsor and Eton*

Harry Potter Studios*

Christchurch

Swanage and Corfe Castle

Winchester and the New Forest

Brighton

London Theatre trips*

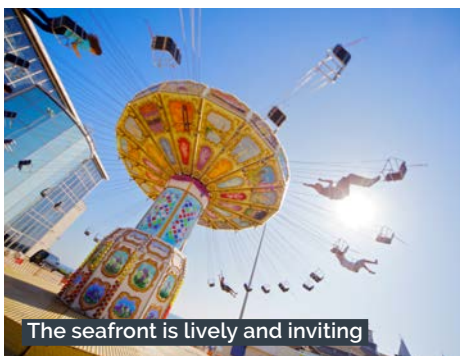
*These excursions are offered via external excursion companies



Bournemouth has one of the UK's best sandy beaches



Location factfile: Kings Bournemouth



The seafront is lively and inviting



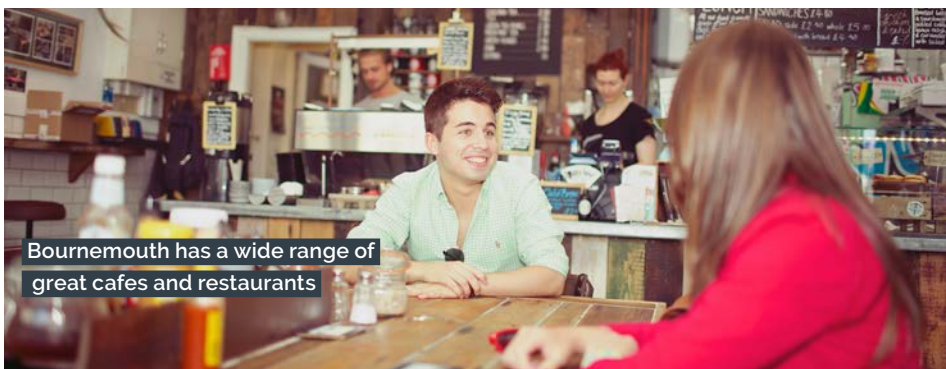
Walking and cycling are popular ways to get about



Bournemouth has plenty of parks and green spaces



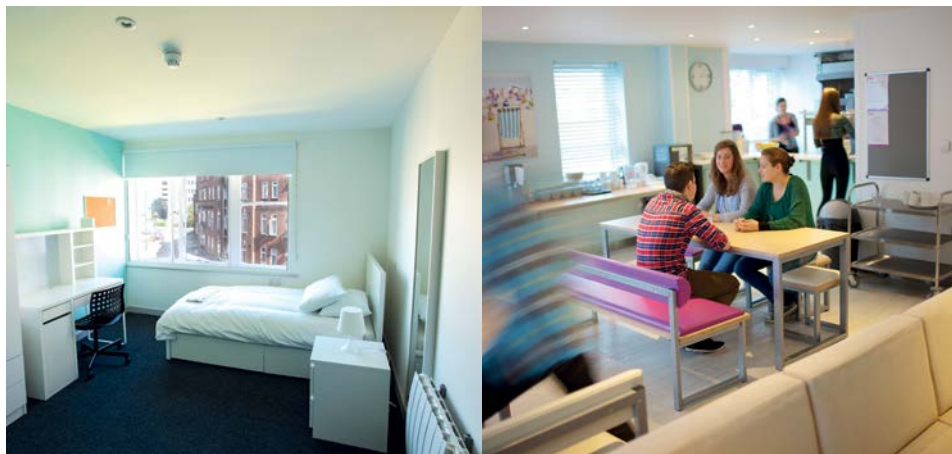
The perfect city for watersports



Bournemouth has a wide range of great cafes and restaurants

Accommodation

Location factfile: Kings Bournemouth



Student Residences

In Bournemouth, there are four comfortable and attractive residences to choose from.

For students aged between 15 – 18, **Charminster residence** is also half board, providing both breakfast and dinner. The residence is located in a residential area just a 5 minute walk from a variety of shops and restaurants and a 25 minute walk to Kings' Campuses.

For students aged 18 and over, they can choose an option of half board or self catering. Our residences are called **St. Peters Quarter (SPQ)** and **Town Centre**. They are both located in a central position in Bournemouth Centre and are a short 10 minute walk from Kings campuses. **Kings Beach residence** offers a half board option and is just 300 metres from the stunning beach, a 10 minute walk from the town centre and 20 minutes from Kings' Campuses.

We offer a range of single, twin and studio rooms and all feature private bathrooms.

Homestay

Our many homestays are located around Bournemouth town centre and the surrounding residential areas. We offer a wide range of family homes with a choice of single and twin rooms. There are also a number of executive families on offer. The majority of our homestay providers have been hosting Kings students for many years.

Download all Bournemouth accommodation factsheets here

Visit kingshub.online/colleges-bournemouth or follow this QR code

